



PennianBank[®]

Remote Workstation Installation Guide

Chrome or Edge



Remote Workstation Installation

Statement of Confidentiality

This document contains unpublished and confidential information proprietary to Pennian Bank, and may not be published, disclosed, copied or distributed without the express written consent of Pennian Bank.

Table of Contents

Your Role	2
Workstation System Requirements	3
New Workstation Installation	4
Add Trusted Site	4
Microsoft Edge.....	4
Chrome	5
Access Remote Deposit Capture:	5
Access the Download Page	5
Required Workstation Components	5
Driver Install	6
SmartSource	6
Browser Support	9
Access Remote Capture: Ready to Scan	12
Programs Associated with Remote Deposit Capture	13



PennianBank

Remote Workstation Installation

Your Role

- PC that meets system Requirements
- New workstation installation action items
 - Add a trusted site
 - Available User configured to Access Remote Deposit Capture
 - Administrator Login Privileges
 - Install the prerequisites, Scanner Drivers and Browser Support files
 - Unpack and connect the Scanner
 - Important – Do not connect or power on the scanner prior to the installation completion
- Available check or initial deposit to test and/or make your first deposit.



Workstation System Requirements

Browser

- Google Chrome (Merchant Capture Only with RangerRemote)
- Microsoft Edge (Merchant Capture Only with RangerRemote)
- Microsoft Internet Explorer 11.0
- Mozilla Firefox (Merchant Capture Only with RangerRemote)

Hardware

- PC
- Scanner
- Monitor, Mouse and Keyboard
- 2 GB free disk space (Minimum)
- Dual core 2.0 GHz (Minimum)
- USB 2.0 port (minimum, for scanner)

Operating System

- Mac OS X10.11
- Microsoft Windows 10 – 64 bit ⁴
- Microsoft Windows 7 - 32 bit
- Microsoft Windows 7 - 64 bit
- Microsoft Windows 8.1 – 64 bit ⁵

Network Connectivity

- Internet Access (Minimum) with 1.5 MB connection speed

Software

- Appropriate Ranger Device Driver (Required) ⁶
- Adobe Acrobat Reader (Version 3.0 or higher)
- Silverbullet Inc. Ranger Interface for Scanner (Provided)
- Medical informatic Engineering Alternatiff Image Viewer (Provided)

³It is recommended that IE 11 is run in Compatibility View for best results. When using the Classic View of Remote Remittance Source Capture, you must run IE 11 in Compatibility View.

⁴Windows 10 is supported with compatible device drivers.

⁵Windows 8 is supported with compatible device drivers.

⁶The Ranger Device Drivers required varies depending on the scanner in use. Please contact your financial institution representative at 717-436-2144 to obtain the appropriate driver. Device Manufacturers may have additional workstation requirements for archived scanning functionality. It is recommended to refer to the manufacturer documentation before implementing.

New Workstation Installation

Administrator Login Privileges will be required to complete this installation

Add Trusted Site

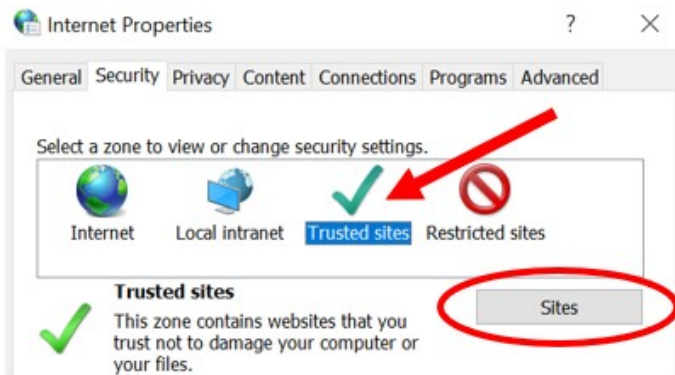
- ▶ Video Resource: [Internet Options: Add a Trusted Site](#)

Before we begin, please add <https://web4.secureinternetbank.com> to your list of trusted sites.

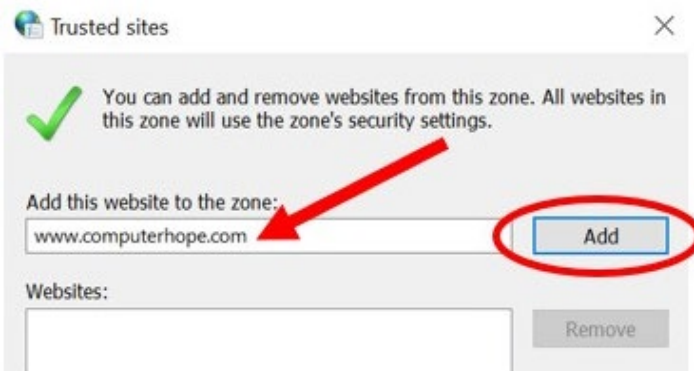
Note: if this is not complete, you will receive a contact administration support message and will be prompted to close your browser several times during this installation process.

Microsoft Edge

- 1) Open the **Control Panel** (Show Icons)
- 2) Click or double click the **Internet Options** icon.
- 3) In the **Internet Properties** window, click the **Security** tab.
- 4) Select the **Trusted Sites** entry and click the Sites button.



- 5) Enter **https://web4.secureinternetbank.com** for the trusted website in the Add this website to the zone text field.
- 6) Click the **Add** button, and then click **Close** to save the website addition.



- 7) Click **OK** to close the **Internet Options** window
- 8) Close the **Control Panel**

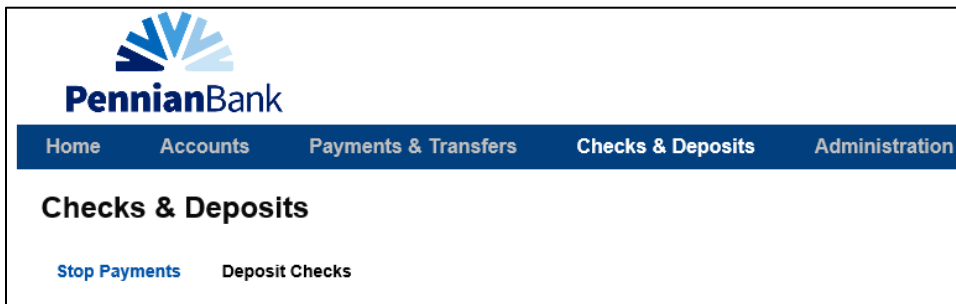
Chrome

- 9) Complete the steps 1 through 6 for Edge above

Access Remote Deposit Capture:

- ▶ Video Resource: [MDC: Accessing Deposit Capture Webpage](#)

- 10) Sign on to Business Online Banking; select **Checks & Deposits** from the top menu bar.
- 11) After the page loads select **Deposit Checks**

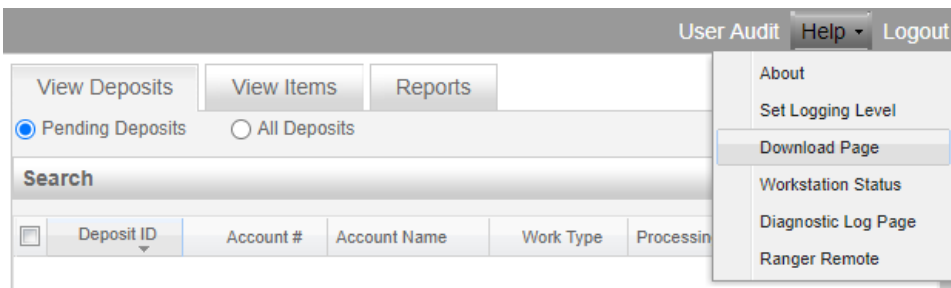


***Note:** See your financial institution representative to receive your assigned User Id and Password with access permissions to Remote Deposit Capture.

- 12) Click **OK** to the Scanner is not ready message

Access the Download Page

- 13) After the Deposit Capture page loads, select the **Help** option at the top of the menu bar, and select **Download Page**.

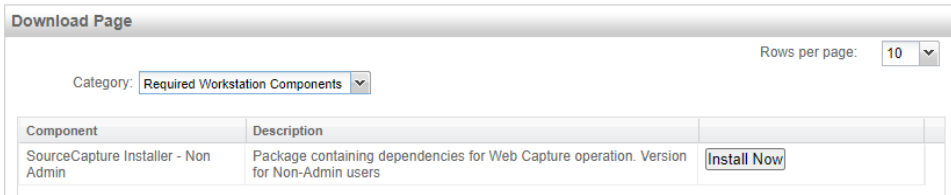


Required Workstation Components

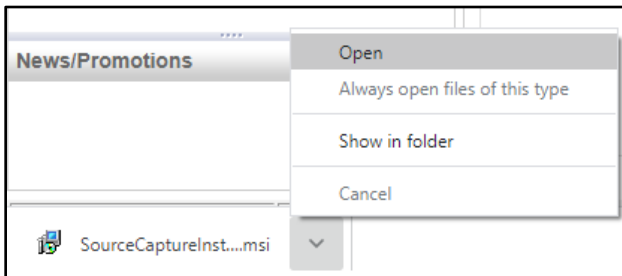
- ▶ Video Resource: [MDC: Required Workstation Components](#)

- 14) Select **Required Workstation Components** from the Category menu

15) Locate **“SourceCapture Installer – Non Admin”** from the below list and click **Install Now**



16) After the component downloads, click on the download box to **Run** or **Open** the installer or press the more options menu and select **Open**



Note: You will see a few window flashes quickly as this programs runs quickly.

Note: this will show in your Programs on your workstation as Fiserv – ZipTrc – Diagnostic Logger

Driver Install

 Video Resource: [MDC: Install SmartSource Driver](#)

Before this installation, ensure your scanner is NOT turned on or plugged into your computer.

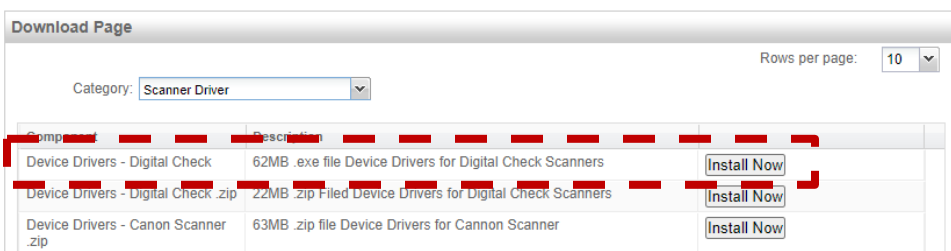
SmartSource

Administrator login privileges will be required to complete this installation

17) If you have navigated away from the **Download page**. Locate the **Help** option at the top of the menu bar, and select **Download page**.

18) Select **Scanner Driver** from the Category menu

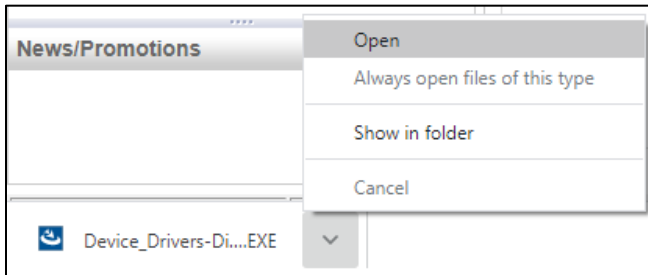
19) Locate the component **“Device Drivers – Digital Check”** and click **Install Now**



20) Wait for the component to download (depending on your download speed, this may take a moments to appear and minutes to download.)

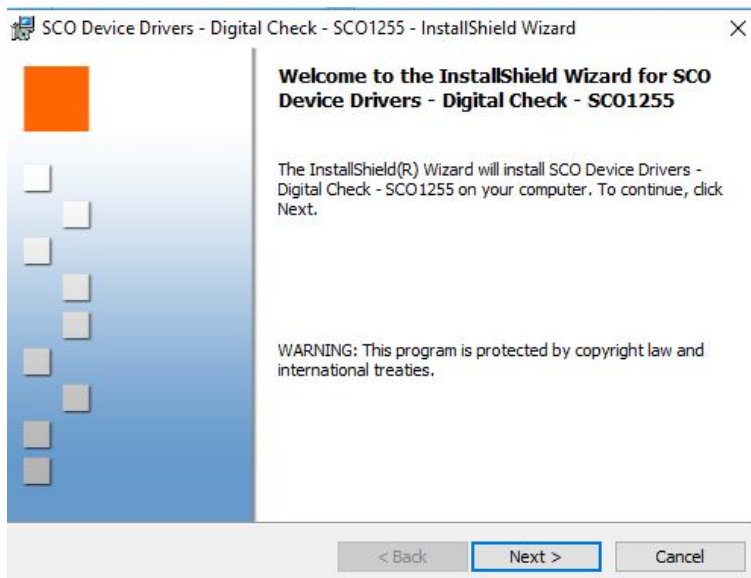
Reference: With a 10MB connection it will take approximately 15min to download this file.

21) After the component downloads, click on the download box to **Run** or **Open** the installer or press the more options menu and select **Open**

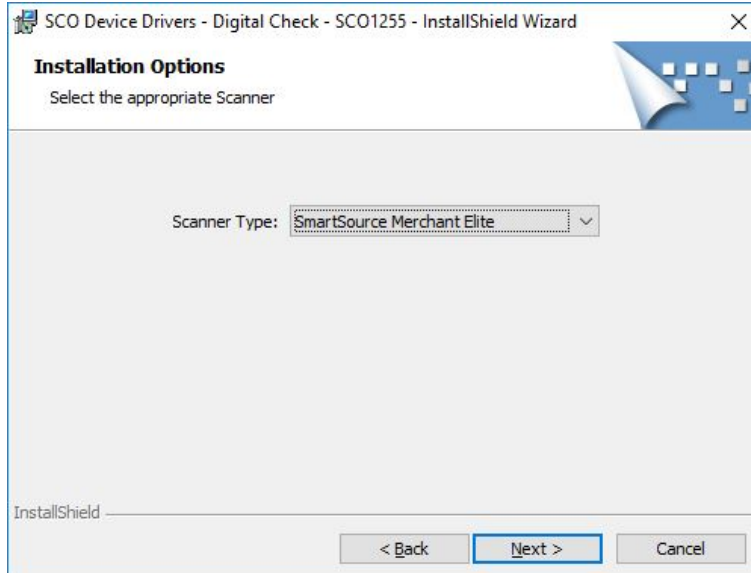


NOTE: This requires administrator rights. This could be your IT person or a manager. If prompted, have an administrator log in or allow access for the application to run with administrator rights.

22) When the Install Shield Wizard displays, click Next

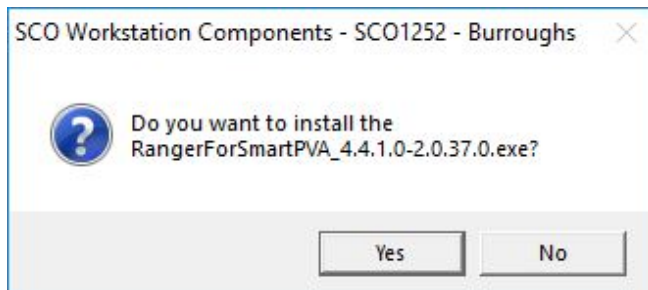


23) Select your scanner from the Scanner Type Menu.

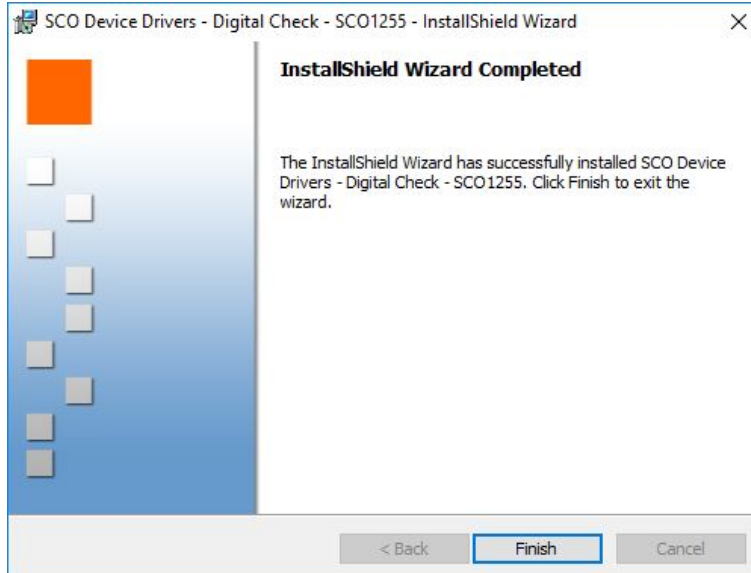


24) Select Install to begin the installation.

25) Select **Yes** to install the most recent Driver package



26) After a moment or two the Install Shield Wizard will complete, select **Finish**



Note: this will show in your Programs on your workstation as Ranger, Ranger plug-in: Burroughs-SmartPVA v#.#.#.# and SCO Device Drivers – Digital Check – SCO1255

Browser Support

 Video Resource: [MDC: Install Browser Support](#)

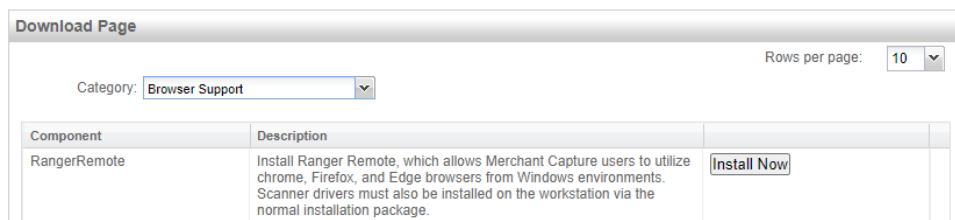
Before this installation, ensure your scanner is NOT turned on or plugged into your computer.

Administrator login privileges will be required to complete this installation

27) If you have navigated away from the **Download page**. Locate the **Help** option at the top of the menu bar, and select **Download page**.

28) Select **Browser Support** from the Category menu

29) Find **RangerRemote** and Click **Install Now**



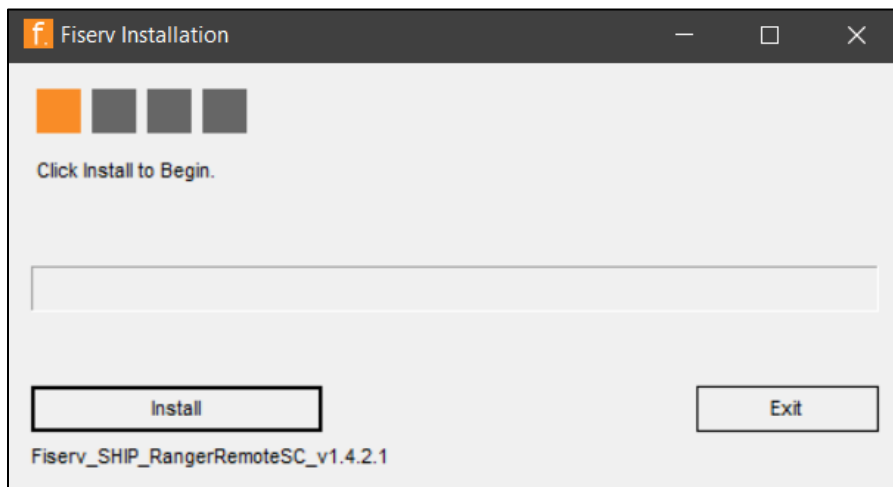
30) Wait for the component to download (depending on your download speed, this may take a moments to appear and minutes to download.)

Reference: *Wish a 10MB connection it will take approximately 5min to download this file.*

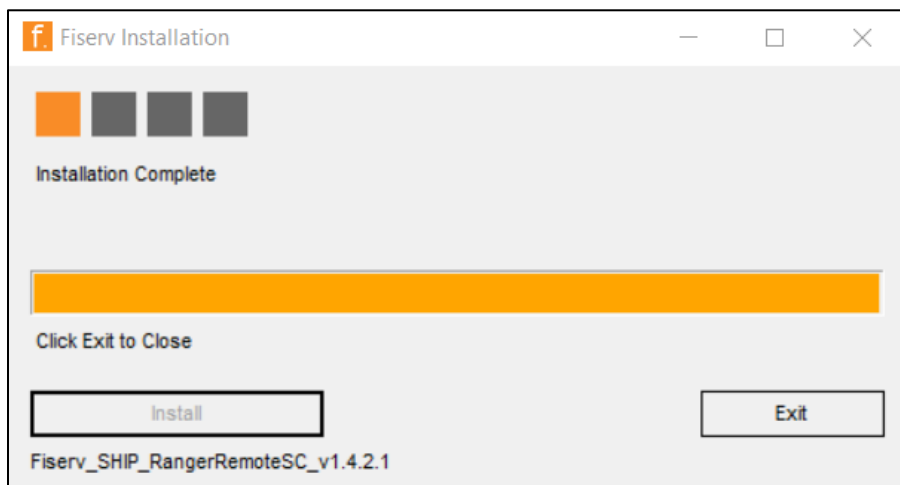
31) After the component downloads, click on the download box to **Run** or **Open** the installer or press the more options menu and select **Open**

NOTE: This requires administrator rights. This could be your IT person or a manager. If prompted, have an administrator log in or allow access for the application to run with administrator rights.

32) When the Fiserv installation screen displays, click **Install**

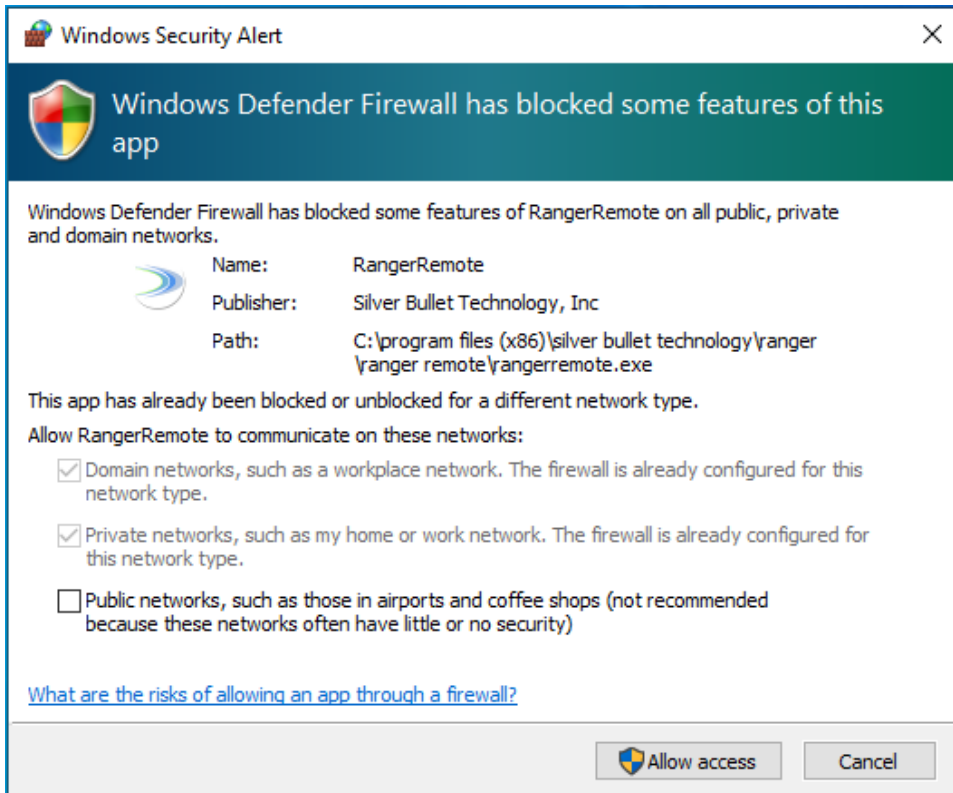


33) The bar will turn orange if the installation was successful. Click **Exit**

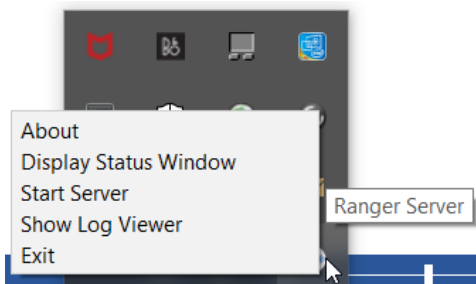


Note: If the bar does not turn orange, be sure to run the .exe application with administrator rights

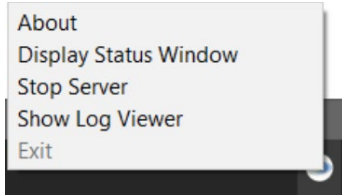
34) You may be prompted to allow RangerRemote to communicate on these networks: Please select the option(s) that are approved by your system administrator.




35) Verify that the Ranger Remote server is running. Locate the system tray icon named Ranger Server and right click on it. If Start Server displays in the menu, click Start Server. If Stop Server displays in the menu, do not click on a selection; the program is already running. *If Start Server is in the Menu, click Start Server*



If Stop Server is in the Menu, the program is already running.



Note: this will show in your Programs on your workstation as Ranger Remote v#.#.#.#

36)  Critical Note: Close all open browsers

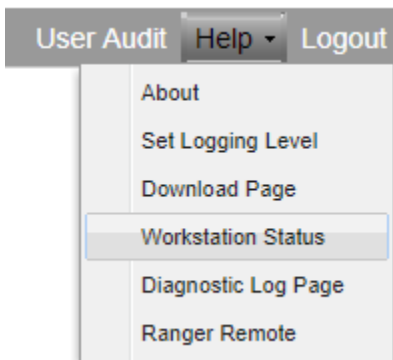
Access Remote Capture: Ready to Scan

37) If it's still open after installations, **Log out** of Remote Deposit Capture & close all open browsers

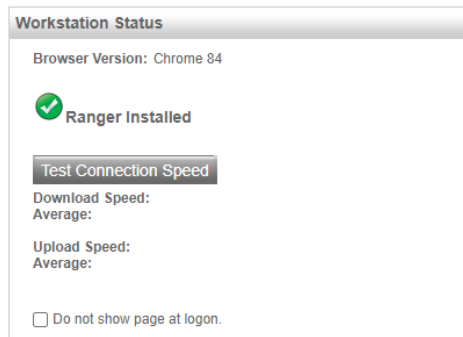
38) **Connect your scanner** to your computer. Ensure power is turned on.

39) **Login** to Remote Deposit Capture through Business Online Banking, as you would normally.

40) To ensure you are ready to scan a deposit locate the **Help** option at the top of the menu bar, and select **Workstation Status**.



41) If you receive all Green Check marks you are ready to create a deposit





Programs Associated with Remote Deposit Capture

<i>Category</i>	<i>Component</i>	<i>Programs & Feature Listing</i>
<i>Required Workstation Components</i>	SourceCapture Installer – Non Admin	<ul style="list-style-type: none"> • Fiserv – ZipTrc – Diagnostic Logger
<i>Scanner Drivers</i>	Device Drivers – Digital Check	<ul style="list-style-type: none"> • SCO Device Drivers – Digital Check – SCO1255 • Ranger Plug-in Burroughs-SmartPVA v#.#.##.# • Ranger
	OR	<ul style="list-style-type: none"> •
<i>Scanner Drivers</i>	Device Drivers – Digital Check.zip	<ul style="list-style-type: none"> • Ranger Plug-in Burroughs-SmartPVA v#.#.##.# • Ranger
<i>Browser Support</i>	RangerRemote	<ul style="list-style-type: none"> • Ranger Remote v#.#.##.#